



Alpha Spirometer

The Future of Portable Desktop Spirometry



Your Spirometry Specialist for Over 30 Years



www.mdspiro.com

The Future of Desktop Spirometry

Performing spirometry tests could not be easier than with the Alpha Spirometer.

The Alpha features a highly accurate, extremely stable Fleisch pneumotrach and meets the latest 2019 ATS/ERS standardization of spirometry ensuring testing meets the most up-to-date, internationally recognized guidelines.

Performing a test could not be easier using the large icon driven touch screen. An updated test quality grading system and live testing prompts, will give you confidence and peace of mind you are producing the best quality results possible.

Using the MDSpiro SpiroSafe viral/bacterial filters provide a significant level of protection for the patient, the device and your staff.

Print your reports instantly using the fast, integrated printer or an 8.5" x 11" printout via Device Studio software that is included with the Alpha.

The Alpha also comes standard with the Connect Middleware software to easily link your Alpha with your EMR system eliminating errors and improving workflow with patient details automatically transferred from your computer to the Alpha. Read codes and PDF reports are automatically filed to the patient's medical record providing enhanced data safety and saving precious time.

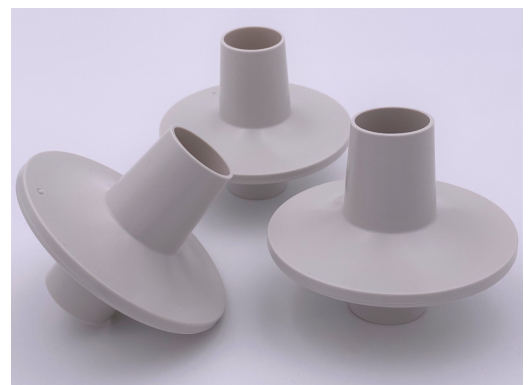
The Alpha Spirometer offers a comprehensive range of advanced features, provides a fast, accurate results and is shipped complete with all necessary accessories in a sturdy carrying case.

Features

- Accurate, Stable Fleisch Pneumotach
- Offers a Child Incentive Display
- Meets 2019 ATS/ERS Standards
- Updated Test Quality Grading System
- Live Testing Prompts
- Choice of Predicted Equations with LLN, and %Pred
- Automatic Interpretation based on ATS/ERS & GOLD standards.
- Clear, easy-to-read report
- Pre/Post bronchodilator comparison
- PDF report generation software
- Complete with durable carrying case
- 5-Year Warranty with Alpha Product Registration

Ordering Information

MD Order Number	Product Description
MD6000	Alpha Spirometer
3325	3-Liter Calibration Syringe
3385	SpiroSafe Filter
3327	Printer Paper (5 Rolls)
3304	Nose Clips (20/pack)



Technical Specifications

Product

Alpha Spirometer

MD Order #:

MD6000

Dimensions

8" (length) x 10" (width)

Weight

3 pounds 5 ounces

Communications

USB (Device Studio), Ethernet/Wi-Fi (Connect)

Flow Detection Principal

Fleisch type pneumotachograph

Essential Performance

Flow measurement output

Essential Performance Test Limits

Flow Accuracy $\pm 10\%$ or ± 20 L/min, whichever is greater

Volume Detection

Flow integration sampling @ 100Hz

Maximum Test Duration

90 seconds

Maximum Displayed Volume

10 L

Volume Accuracy

Better than $\pm 2.5\%$

Voltage/Frequency

Power Supply: Input 100-240V, 50/60Hz Output 12V, 1.5A

Battery: 7.2V, 2.2Ahr

Accuracy When in Operating Temperature Range Conditions

Flow $\pm 10\%$, Maximum flow rate ± 14 L/s, Minimum flow rate ± 0.02 L/s

Performance Standards the Alpha meets or exceeds

ATS/ERS 2019, ISO 23747:2015 & ISO 26782:2009

Printer Type

Thermal

